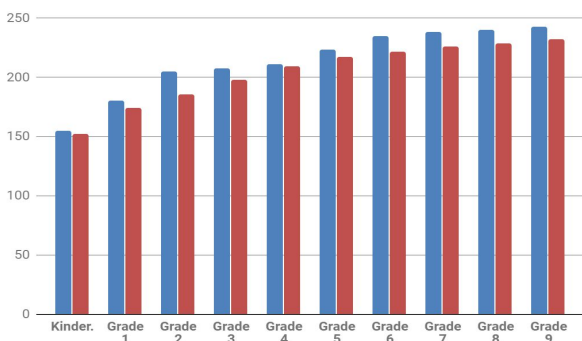


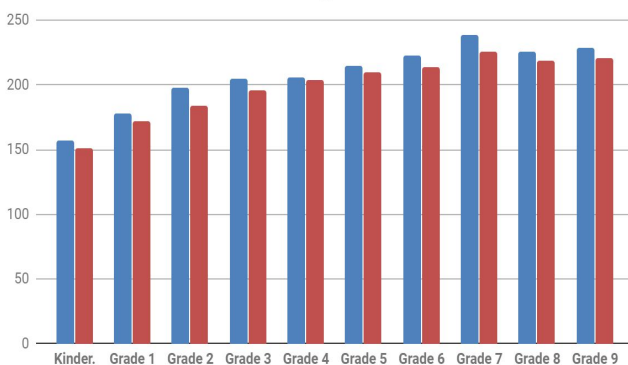
## Assessment Results:

NWEA tests are given to students in grades K-9. The following are results from winter testing as spring testing is in session. SMS scored above the norm. Blue bar represents our students, red is the national norm.

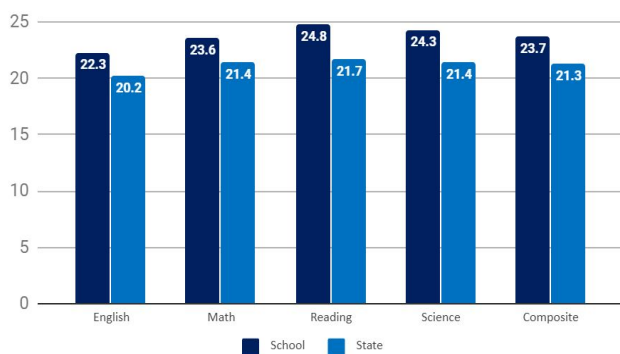
NWEA Winter Math Results 2018-2019



NWEA Winter Reading Results 2018-2019



ACT Results 2017-2018



## Financial:

### School Revenue Budget

REVENUES	2018/2019 Budget	2019/2020 Budget
Tuition	\$901,092	\$921,063
Fundraising & Donations	\$279,250	\$240,277
Student Service & Activity Income	\$151,050	\$147,650
Other	\$40,306	\$31,190
School Subsidy	\$566,715	\$551,526
<b>TOTAL REVENUE</b>	<b>\$1,938,413</b>	<b>\$1,891,706</b>

### School Expense Budget

EXPENSES	2018/2019 Budget	2019/2020 Budget
Salaries	\$1,409,526	\$1,352,971
Other Administrative	\$139,882	\$135,842
Instructional	\$155,285	\$172,693
Plant & Operation	\$233,720	\$230,200
<b>TOTAL EXPENSES</b>	<b>\$1,938,413</b>	<b>\$1,891,706</b>
<b>NET INCOME</b>	<b>\$0</b>	<b>\$0</b>

*If you have any questions or comments, please call the school.*

*A special **thank you** to Mrs. Annette Lux, Ms. Boston Portner, Mr. Rick Peters, and Mr. Andrew Dieter for serving St. Mary's School.*

## St. Mary's School 2018-2019 Annual Report



### Mission Statement

*St. Mary's Catholic School exists to assist parents in passing on the Catholic faith while providing a quality education in a safe and positive environment.*

### **Philosophy Statement**

The Holy Trinity, Father, Son, and Spirit, is to be the center of our lives as we strive to grow. As a people devoted to God, we are called to grow in faith, to proclaim the Good News, and to witness to Christ. At St. Mary's School we share a commitment to live out our faith by growing spiritually, creating community, and being of service.

As a school community we strive to create an environment where individuals are challenged to achieve their potential. We further challenge every member of our community to foster peace and justice in their daily living. Through prayer and critical thought, we encourage each person to discover God's will for his or her life and to follow it.

### **Tuition Rate/Cost Comparison for the 2018-2019 School Year**

	Grade School	High School
Average Annual Tuition	\$3,205	\$4,156
Average Tuition per Day	\$17.51	\$22.71
NCEA Average Tuition	\$4,841	\$11,239
Average Cost to Educate a Student		
St. Mary's	\$5,666	\$8,883
NCEA	\$5,936	\$11,790

The average public school per pupil cost of \$11,454, as reported by the National Catholic Education Association, includes both elementary and secondary schools. Catholic schools save the US \$21 billion a year in educational costs.



### **Catholic Identity Theme for 2018-2019: Forming Faithful Disciples**

This year, our entire student body and staff focused on virtues.

*"A virtue is a habitual and firm disposition to do the good. It allows the person not only to perform good acts, but to give the best of himself. The virtuous person tends toward the good with all his sensory and spiritual powers; he pursues the good and chooses it in concrete actions." CCC 1803*

The following virtues were explained, practiced, and recognized in students by staff:

***Faith, Reverence, Stewardship, Generosity, Gratitude, Honesty, Mercy, Justice, and Zeal***

### **Accredited through MNSAA since 1991**

This year, a team representing MNSAA visited our school to study our findings from the self-study. In March, we received word that we are officially accredited for another seven years. An important part of being accredited is to have a viable, visionary strategic plan.

### **Strategic Plan Goals Achieved for 2018-2019:**

- Implemented guided reading and Fountas/Pinnell assessment in the elementary.
- K-12 continued implementing learning targets.
- Identified Google as the education management system to be utilized by K-12 staff.
- Implemented the educational management system, Google.

### **Strategic Plan Goals for 2019-2020:**

- Identify what 21st century learners need for technology skills.
- Install ventilation in the junior high science lab and renovate the phy-ed storage room.
- Re-evaluate the Mission Statement to include ways to form intentional disciples.
- Develop a technology infrastructure plan.